

# Montana

RIFLE COMPANY



WELCOME TO  
MONTANA RIFLE COMPANY



# Montana

RIFLE COMPANY

*At MONTANA RIFLE COMPANY our people are passionate about hunting and the shooting industry.*

*It is this passion that pushed us to bring you our new line of production rifles. Each and every person at MRC strives to make your rifle purchase the best experience you have ever had. We want your rifle to give you the confidence to make all your shots count.*



## TABLE of CONTENTS:

Past, Present, Future...	4	American Standard Rifle ~ ASR / ASR-SS	12	Montana Tactical Rifle ~ MTR	22
Tested Around The World	6	American Vantage Rifle ~ AVR / AVR-SS	14	Colorado Buck Rifles ~ CBE	24
Our Model 1999 Actions	8	Extreme Rifles ~ X3 / Vantage V2	16	Partners & PRO Staff	26
American Legends Rifle ~ ALR / ALR-SS	10	Seven Continents Rifle ~ SCR-SS	18	Warranty & MOA Policy	27
		Montana Predator Rifle ~ MPR	20		

# PAST, PRESENT, FUTURE...

1990



1993



1995



The Montana Rifle Company was born out of the expertise of Montana gunsmith Keith Sipe. He opened shop in 1990, doing repair work for local sportsmen, and within three years expanded into making his own barrels. Demand was high, and Sipe's barrels developed a stellar reputation. Accuracy was Sipe's obsession, and his barrels delivered exactly that. At the head of Montana Rifleman Inc., Keith Sipe envisioned an accurate, reliable rifle that the hunter could take anywhere.

The custom rifles were experiencing a definite resurgence, and supplies of the once abundant Mauser action began to dry up. By the end of the decade, Sipe had developed his own action, utilizing many of the best features from the different actions he'd come to appreciate; the Montana Rifle Company – and its Model 1999 action – was born. Like the Mauser and Winchester actions that preceded it, the 1999 earned a reputation as a rock-solid, dependable controlled-round-feed (CRF) action that would deliver the goods under

the roughest of conditions.

By 2003, both Montana Rifleman (MRI), Barrel Manufacturer and the Montana Rifle Company (MRC), Action manufacturer, began producing and selling products in a production line rather than the typical custom "one at a time". MRI began producing barrels for several of the larger manufacturers and MRC was filling pre-orders of more than 2000 actions. By 2005 MRI was doing close to 1500 barrels a week and the MRC was putting out 20-30 actions a week.



# *The Quality of Our Products Reflects the Quality of our People.*

1999



2011



2016



2018



In January 2007 Keith handed the reins of Montana Rifle Company to his son, Jeff Sipe; Jeff would handle the daily duties of Montana Rifle Company while Keith would focus on the barrel shop. MRI was doing close to 2500 Barrels per week and MRC was still around 25-30 actions per week. During the research of the action market it became very clear that the majority of actions in the market for custom rifles were Remington 700 clones but that the Production Rifle market was under served in the CRF area. It was at that time that Jeff decided to start a line of Semi-Custom rifles to be

marketed to the general public.

Fast forward to 2010, and after extensive market research Montana Rifle Company would be restructured and redirected to develop a line of production rifles. From the launch of their first rifle – The American Standard Rifle, or ASR – the Montana Rifle Company heralded accolades from the hunting and shooting community. The ASR won Field & Stream's 'Best of the Best' award in 2011, the Xtreme Weather Rifle won Safari Club International's 'Gun of the Year' award in 2012, the ASR-SS received the

Field & Stream 'Best of the Best' in 2015, and in 2016 the American Legends Rifle (ALR) won the highest honor in the industry: The National Rifle Association's 'Gun of the Year'. The Montana Rifle Company continues to develop the products that best serve their customer's needs, offering a rifle for any and all hunting and shooting situations on earth.

Montana Rifle Company's mission has not changed from The Sipe's original vision: to produce the best rifle they could, proudly made here in Montana, USA; that is not about to change.

# TESTED AROUND THE WORLD...



Montana Rifle Company is located in the heart of the American West, and our favorite elk and mule deer spots are not far from our back door. But that doesn't stop us from traveling the globe to test our products on the world's most grueling hunts. Our goal is to make the most dependable and accurate rifles possible and the only way to realize that is to use them under harsh, real-world

conditions and to put them in the hands of the world's foremost shooting and hunting experts. No matter where the hunt might take us—whether to the frozen tundra in the arctic, the barren mountains of Central Asia, or the blistering heat of Africa—we make sure our rifles are up to the task. This ethic of continual improvement is in the DNA of every rifle we build.





VIRGINIA BEAR-DEER DAMAGE STAMP  
08/08/08  
\$1.00  
SEASON 2008-2009

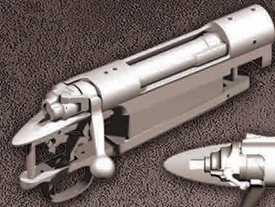


# Montana

RIFLE COMPANY

## ACTIONS

# HIGHLIGHTS OF A MONTANA



SHORT  
ACTION



LONG  
ACTION



PH  
ACTION



### BOLT FEATURES:

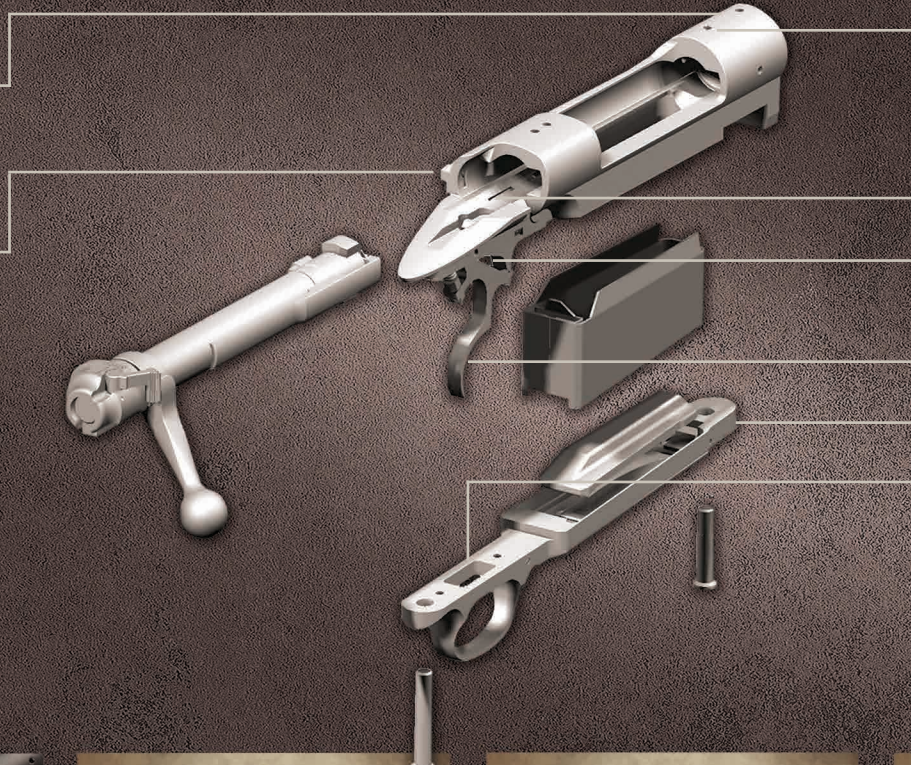
- Large Mauser style claw extractor for positive feeding and extraction.
- Mauser style ejector vs. the push feed ejectors that always have pressure on the cartridge
- Winchester M70: 3-position safety, position 2 allows bolt to move while on safe and position 3 locks bolt and acts as a firing pin lock safety.
- Mauser 98 style inner collar ring - doesn't require an extractor cut in the barrel or cone breeching within the barrel
- Controlled round feed - doesn't require chambering a round to have extractor grasp case head for control
- Bolt handle and bolt body are investment cast as one solid piece so it is much stronger than welded, soldered or screwed on bolts.





# RIFLE COMPANY MODEL 1999 ACTION:

- Three solid points of contact mating the barrel to the receiver:  
Receiver C-ring to barrel breech face, the threads and the receiver face to the barrel shoulder
- Reengineered bolt release for simplified bolt removal
- Right or left hand for most models
- 5 vent gas system will push gases away from the shooters face for superior safety in case of catastrophic failure
- Chrome moly and stainless steel available



- Drilled and tapped for Winchester M70 post-64 classic two-piece base
- Dovetailed lug and raceway act as an anti-bind feature
- Timney aftermarket triggers for Winchester M70 work in our rifles
- Winchester M70 pre-64 adjustable trigger, functions in any environment
- One-piece steel bottom metal for a better lock in the stock
- Winchester M70 stock will fit our barreled actions





*Montana*  
RIFLE COMPANY

# AMERICAN LEGENDS

## ALR & ALR-SS

Symbolic of the Spirit of the American West, Montana's American Legends Rifle is made for the adventurer in big game country. Built around the Montana Model 1999 long-action receiver, the American Legends Rifle is available in five classic long-action and six Short-action cartridges, in a striking package that is perfect for hunting the wild places. The long-action is available in left and right-hand configurations, as well as matte

blued steel or 100% stainless steel, the American Legends Rifle is set in an AA-grade American black walnut stock, with contrasting black forend tip and wrap around forend checkering, and a stylish raised cheekpiece. An adjustable trigger and free-floated barrel allow for precise shot placement. As bold as those who settled the West, the American Legends Rifle will follow you on your greatest adventures.



# RIFLE



ALR ~ MATTE BLUED CHROME MOLY STEEL  
- AA Grade Turkish Walnut Stock with Black Tip & Grip  
- Wrap Around Checkered Full Forearm  
- Short Action Right Hand Only (*Left Hand ~ Coming Soon!*)

ALR-SS ~ STAINLESS STEEL  
- 100% Stainless Steel  
- AA Grade Turkish Walnut Stock with Black Tip & Grip  
- Wrap Around Checkered Full Forearm  
- Short Action Right Hand Only (*Left Hand ~ Coming Soon!*)

#### BARRELS FOR CALIBERS:

243 WIN	270 WIN	300 WSM
25-06 REM	270 WSM	30-06 SPRINGFIELD
6.5 PRC	7MM REM MAG	300 WIN MAG
6.5 CREEDMOOR	308 WIN	338 WIN MAG



[www.montanarifleco.com](http://www.montanarifleco.com)



*Montana*  
RIFLE COMPANY

# AMERICAN STANDARD

## ASR & ASR-SS

The nucleus of the Montana American Standard Rifle is the Model 1999 action – a controlled-round-feed affair, which blends the features of the classic designs with modern machining technology. Add a three-position wing safety, a trigger designed in the fashion of the classic M-70, the option of chrome-moly blued steel (ASR) or 100% stainless steel barrel and action (ASR-SS) – drilled and tapped for a scope mount – and glass bedded into a Turkish walnut stock, and you've got a rugged and dependable rifle for all your

hunting needs. Available in 31 different cartridges, suitable for varmints and small game up to those that will handle the largest American game animals, the American Standard Rifle will offer a lifetime of service, and quickly become an old friend. The free-floated, button-rifled barrels are free of iron sights, and the ASR is stocked properly for use with a riflescope. Available in both left and right-hand configurations, there is an American Standard Rifle for nearly any hunting situation.



# D RIFLE



## ASR ~ BLUED

- Matte Blued Chrome Moly Steel
- European Walnut Stock
- Wrap Around Checkered Full Forearm
- Right or Left Hand

## ASR-SS ~ STAINLESS STEEL

- Stainless Steel
- European Walnut Stock
- Wrap Around Checkered Full Forearm
- Right or Left Hand

## BARRELS FOR CALIBERS:

22-250 REM	6.5X55	7MM-08 REM	30 NOSLER
243 WIN	6.5 CREEDMOOR	7X57 MAUSER	300 RUM
6XC	6.5-284 NORMA	7MM REM MAG	325 WSM
6MM CREEDMOOR	6.5 PRC	7MM WSM	338 WIN MAG
25-06 REM	270 WIN	7MM RUM	338 FED
257 ROBERTS	270 WSM	308 WIN	338 RUM
260 REM	280 REM	300 WSM	33 NOSLER
26 NOSLER	280 AI	30-06 SPRINGFIELD	
264 WIN MAG	28 NOSLER	300 WIN MAG	

[www.montanarifleco.com](http://www.montanarifleco.com)



*Montana*  
RIFLE COMPANY

# AMERICAN VANTAGE

## AVR & AVR-SS

When your hunting situation requires a heavy bore, the American Vantage Rifle answers the call. Built around the proven MRC Model 1999 controlled-round-feed action, and chambered in both classic and modern cartridges, the AVR and AVR-SS have what it takes to get the job done, no matter the continent. Available in a matte-blued chrome-moly steel action and barrel (AVR) or a 100% stainless configuration (AVR-SS), and glass bedded into a AA Turkish walnut stock with Ebony Forend tip and grip cap, this rifle offers Marbles replaceable steel front and rear sights, in

addition to being drilled and tapped for mounting your favorite riflescope. The fixed Mauser-style ejector ensures positive ejection each time, and a three-position wing safety allows for the safe unloading of the firearm. With a fully adjustable trigger, the AVR series of rifles represents a solid choice for those who enjoy the pursuit of dangerous game, yet enjoy the beauty of fine walnut. Available in both left and right-hand configuration, the Montana AVR is ready to accompany you on your travels around the world.



# RIFLE



## AVR ~ BLUED

- Matte Blued Chrome Moly Steel
- XX Turkish Walnut Stock
- Right or Left Hand

## AVR-SS ~ STAINLESS STEEL

- Stainless Steel
- XX Turkish Walnut Stock
- Right or Left Hand

## BARRELS FOR CALIBERS:

35 WHELEN	416 REM
375 RUGER	458 WIN MAG
375 H&H	458 LOTT
416 RUGER	



[www.montanarifleco.com](http://www.montanarifleco.com)



*Montana*  
RIFLE COMPANY

## EXTREME RIFLES

### X3

For those hunts where every ounce matters, Montana introduces the Extreme X3 Rifle. Weighing in at just less than seven pounds, the X3 is a well-balanced yet highly portable package that is perfect for the toughest mountain hunts. A satin finish stainless steel Model 1999 barreled action is mated to the new MRC Premium light-weight synthetic stock, for a weatherproof package that will meet any

demand. Using a match-grade chamber, aluminum and glass bedding, and a free floated, button rifle barrel, the X3 will give excellent accuracy, and the HIVIZ XCoil recoil pad will take the sting out of the hardest kicking cartridge. Aircraft grade aluminum bottom metal helps maintain rigidity while keeping weight to a minimum. Lace up your alpine boots, and take the X3 to the mountain top.







## V2 VANTAGE

You want a rifle that will handle anything Mother Nature can dish out. From sub-freezing to blistering heat, from Alaskan salt spray to the dust of Africa, the Montana V2 Extreme Vantage Rifle can take anything you throw at it. Using a 100% stainless steel Model 1999 action and barrel, and a carbon

fiber stock with Kevlar reinforcement, the V2 can be taken anywhere, for any game animal on earth. With the controlled-round-feed action that Professional Hunters around the world have come to depend upon, and Marble's front and rear iron sights, the V2 is chambered in no-nonsense calibers, for those hunts when your life depends on your rifle.



### X3 ~ STAINLESS STEEL

- New MRC Synthetic Stock
- Aluminum Pillar & Glass Bedded
- Right or Left Hand

#### BARRELS FOR CALIBERS:

22-250 REM	6.5X55	7MM-08 REM	30 NOSLER
243 WIN	6.5 CREEDMOOR	7X57 MAUSER	300 RUM
6XC	6.5-284 NORMA	7MM REM MAG	325 WSM
6MM CREEDMOOR	6.5 PRC	7MM WSM	338 WIN MAG
25-06 REM	270 WIN	7MM RUM	338 FED
257 ROBERTS	270 WSM	308 WIN	338 RUM
260 REM	280 REM	300 WSM	33 NOSLER
26 NOSLER	280 AI	30-06 SPRINGFIELD	
264 WIN MAG	28 NOSLER	300 WIN MAG	

### V2 ~ STAINLESS STEEL

- New MRC Synthetic Stock
- Aluminum Pillar & Glass Bedded
- Marble Front & Rear Sights
- Right or Left Hand

#### BARRELS FOR CALIBERS:

35 WHELEN	416 REM
375 RUGER	485 WIN MAG
375 H&H	458 LOTT
416 RUGER	

[www.montanarifleco.com](http://www.montanarifleco.com)



*Montana*  
RIFLE COMPANY

# SEVEN CONTINENTS

## SCR-SS

For those who travel the globe, and appreciate the big cartridges which require a magnum-length action, Montana's Seven Continents Rifle. Using the strong Model 1999 action – a double square bridge, controlled round feed action – the SCR is chambered for the largest cartridges like the .416 Rigby, .378 and .460 Weatherby Magnums and the mighty

.505 Gibbs Magnum. We have placed the stainless steel action on a carbon fiber, Kevlar-reinforced stock, to make the rifle impervious to weather, and have it equipped with Marble's adjustable iron sights (except for the .338 Lapua Magnum). When you want a big cartridge to make a big statement, the Seven Continents Rifle is the rifle for you.



# RIFLE



## SCR-SS ~ STAINLESS STEEL

- Professional Hunter Action
- Match Grade Hand Lapped Barrel
- Custom Carbon Fiber Kevlar Reinforced Synthetic Stock
- Steel Marble Replaceable Front & Rear Open Sights
- Right or Left Hand

## BARRELS FOR CALIBERS:

338 LAPUA MAG	416 RIGBY
338 NORMA MAG	460 WBY MAG
378 WBY MAG	505 GIBBS

» The 338 Lapua Mag and 338 Norma Mag comes standard with no sights but with a threaded muzzle brake. All other cartridges come standard with the replaceable Marble rear and front sights. Both sights feature a dual screw system for strength.



[www.montanarifleco.com](http://www.montanarifleco.com)



*Montana*  
RIFLE COMPANY

# MONTANA PREDATOR

## MPR

The Montana Predator Rifle (MPR) is a serious piece of hunting gear! Montana Rifle Company has mated the Model 1999 action to a stainless steel #5 Heavy Sporter/Varmint barrel, threaded for a muzzle brake or suppressor and housed in the new T-H (Tactical Hunter) Stock. The MPR comes chambered in light recoiling predator cartridges such as the .22-250 Rem, .243 Win, 6.5 Creedmoor and 6.5 PRC for long shots on windy days. Also available

in the .300 Win Mag and 300 WSM for those who wish to have an all-around big game cartridge. The T-H Stock comes with dual front sling swivel studs allowing for easy bipod attachment and equipped with Montana's "Soft Pad" cheek piece and enhanced palm swell for a comfortable grip on the rifle. Finished in the same color scheme as the X3, black with grey speckle. This rifle gives you a positive shooting experience, especially from prone positions!



# RIFLE



MPR ~ STAINLESS STEEL

- NEW T-H "Tactical Hunter Stock"
- Adjustable "Soft-pad" Cheekpiece & Enhanced Palm Swell
- Threaded for Muzzle Break / Suppressor  
*(Thread Cap Included)*
- Dual Front Sling Swivel Studs
- #5 Heavy Sporter/Varmint Barrel
- Right Hand (*Left Hand ~ Coming Soon!*)

## BARRELS FOR CALIBERS:

22-250 REM  
243 WIN

6.5 CREEDMOOR  
6.5 PRC

300 WIN MAG  
300 WSM

[www.montanarifleco.com](http://www.montanarifleco.com)



Montana  
RIFLE COMPANY

# MONTANA TACTICAL

## MTR

Long range precision shooting requires special tools, not the least of which is a highly accurate rifle. The Montana Tactical Rifle (MTR) is designed from the ground up for just this purpose. The heart of the rifle is the Model 1999 action, combined with a heavy target contour barrel threaded and ready to install suppressor or muzzle brake. The MTR is housed in the new

T-H Tactical Hunter Stock, hydro-dipped in the Kryptek Typhon pattern with the adjustable "Soft Pad" cheekpiece and enhanced palm swell for a proper grip position. The detachable magazine and Badger Ordinance Tactical bolt knob allows for fast reloading, and the Timney trigger will allow you to place your shots accurately every time.



# RIFLE



- MTR ~ Cerekote Sniper Grey Finish  
- NEW T-H "Tactical Hunter Stock"  
*(Hydro-dipped Typhon Kryptek Pattern)*  
- Adjustable "Soft-Pad" Cheekpiece & Enhanced Palm Swell  
- Dual Front Sling Swivel Studs  
- Badger Ordnance Tactical Bolt Knob  
- Timney Trigger  
- Detachable Magazine  
- 100% Stainless Steel  
- Right Hand (*Left Hand ~ Coming Soon!*)

## BARRELS FOR CALIBERS:

6.5X284 NORMA	308 WIN	338 NORMA MAG
6.5 CREEDMOOR	300 WSM	338 LAPUA MAG
6.5 PRC	300 WIN MAG	

>> 300 Norma Mag, 338 Norma Mag and 338 Lapua Mag are offered in T-11 Stock and includes the "Montana Flats Brake" installed. The T11 stock is fully adjustable for both length of pull and comb height.

>> Additional Kryptek Patterns: Pontus, Banshee, Banshee Reduced, Nomad Neptune Reduced, Typhon, Highlander and Raid at no additional charge.

[www.montanarifleco.com](http://www.montanarifleco.com)



# COLORADO BUCK EDITION CBE

Famed Outdoor Personality Colorado Buck has teamed up with Montana Rifle Company to create the Colorado Buck Special Edition Rifle, a dependable, long range design that is as rugged as they come. A 24" hand-lapped, match grade barrel is mated to the Montana Flats brake to reduce recoil, and the Tungsten Gray Cerakoted

barreled action is set in a carbon fiber, Kevlar-reinforced stock finished in Colorado's favorite caramel brown with black spider webbing finish. Available in a selection of calibers suitable for varmints up to the largest game on earth, the Colorado Buck Edition Rifle is fully equipped and proven to travel the world with you.

EXTREME WEATHER, EXTREME LIGHT, EXTREME PERFORMANCE,  
MEETING ALL YOUR EXPECTATIONS... THE PERFECT RIFLE.





# TION RIFLE



## CBE - COLORADO BUCK EDITION RIFLE

### STOCK

- NEW! MRC Premium *Light Weight* Synthetic Stock
- Reinforced Carbon Fiber
- HIVIZ XCoil Recoil Pad
- Length of Pull: 13.625"
- Aluminum Pillar & Glass Bedded
- Tungsten Grey Cerekote Finish Sling Swivel Studs
- Signature Caramel Brown Color

### ACTION

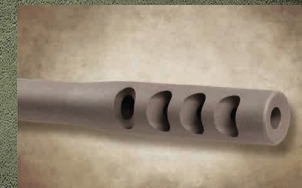
- Right or Left Handed Available
- Tungsten Grey Cerekote Finish
- MDF Logo on Action & Colorado Buck Logo on Floorplate
- Adjustable Old Style M70 Trigger: 3-3.25 lbs (*Standard Pull*)

### BARREL

- Free Floated Stainless Steel Barrel
- Match Grade Chamber
- Button Rifled & Hand Lapped
- Includes Montana Flats Muzzle Break
- Tungsten Grey Cerekote Finish

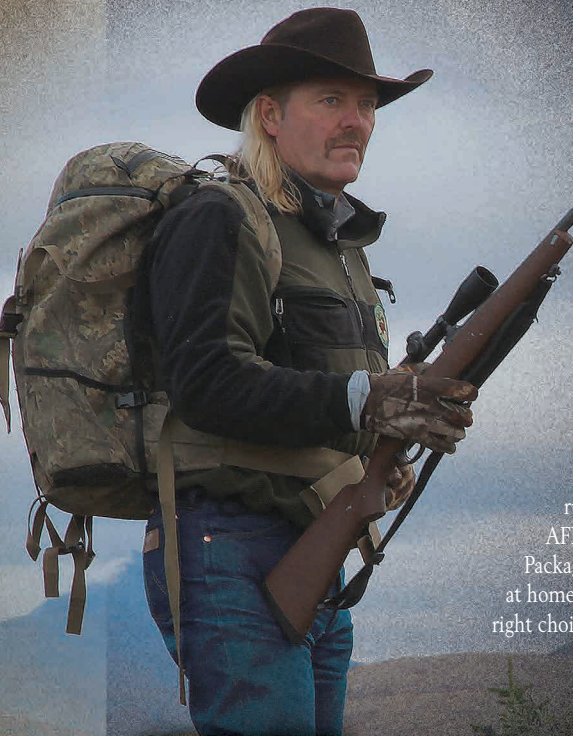
### BARRELS FOR CALIBERS:

22-250 HUNTER	6.5 CREEDMOOR	300 WSM	375 H&H
22-250 VARMINT	7MM REM MAG	300 WIN MAG	505 GIBBS



RIFLE WEIGHT  
SHORT ACTION: 6 LBS 14 OZ.  
LONG ACTION: 7 LBS

[www.montanarifleco.com](http://www.montanarifleco.com)



# OUR PARTNERS

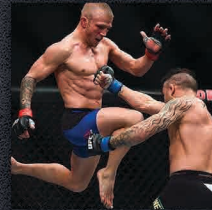
*We are Proud Supporters of...*

# NRA



**COLORADO BUCK,**  
*ProStaff*

I have over 45 years of hunting and shooting rifles in my background and Now Finally, an accurate, light weight, durable, rugged, dependable and most of all AFFORDABLE Rifle. I call it the "Complete Package" for every hunter or shooter whether at home or abroad your assured you've made the right choice when toting a Montana Rifle.



**TJ DILLASHAW,**  
*ProStaff*

TJ's dedicated to the sport of MMA and to full time training. He was cast on the 14th Season of The Ultimate Fighter where he fought his way to the finals. The success on the television show lead to a contract in the UFC, becoming the UFC Bantamweight Champion on May 24th, 2014.



**JIMMY HERMAN,**  
*ProStaff*

The opportunities that Jimmy has had touring with Carrie Underwood has led him to meet numerous people in the hunting industry. When not onstage he is in the gym training for rigorous mountain hunts, and writing articles for hunting, music, and fitness publications across the globe.



**JOHNNY UNSER,**  
*ProStaff*

Johnny Unser is a member of the Unser Racing Family and has carried on the tradition by qualifying for the prestigious Indianapolis 500 in five consecutive years. He is also an avid outdoorsman, a member of RMEF Team Elk show and spends much of his free time somewhere in the mountains.



**ZACH SWON,**  
*ProStaff*

Zach Swon of Country music duo, The Swon Brothers, has two passions in life, music and hunting. When he's not writing songs, taping a TV show, producing new music or performing onstage with his brother Colton, you can be sure that Zach is somewhere clad in camo and breathing some fresh air down the barrel of a fine firearm. The Swon Brothers first gained national notoriety as finalists on NBC's "The Voice," and later released their major-label debut, THE SWON BROTHERS. After spending the past several months on the road and in the studio, as well as a field or two, Zach is poised to start a new chapter with brand new music and a nice spot in a tree stand.



**TAYLOR REISBECK,**  
*ProStaff*

By sharing her love and adventures of the outdoors, her greatest hope is to inspire others and give them the confidence to tackle the most demanding outdoor activities. She has been fortunate enough to have been picked as a finalist for Extreme Huntress Contest being one of the top six women in the world two years in a row. She is the only finalist to have been picked twice in Extreme Huntress history. She would ultimately want to be on a hunting series where She can promote women, children, and our future generations in hunting.



**CINDI BAUDHUIN,**  
*ProStaff*

Shooting sports were something that came quite naturally to Cindi. Her successes at the range have translated to validated tags of many of North America's big game species. In constant pursuit of new challenges, most of her hunts take place deep in the high country.

# Montana

RIFLE COMPANY

WE BELIEVE OUR RIFLES TO BE OF  
GREAT QUALITY, PERFORMANCE AND VALUE.



## WARRANTY

Every Montana Rifle Company Product comes with our “Limited Lifetime Warranty” on all parts for the life of the rifle. This does not include normal wear and tear, barrel life, misuse or damage from the consumer. If there is a problem the consumer just needs to send the product in to our facility and once it is deemed a warranty issue, we will fix or replace it.

## MOA POLICY

It is our belief that guarantees are worth the paper they are written on. We do not offer a Guarantee. However, it has ALWAYS been our policy at MRC that if your rifle will not shoot 1 MOA or better, send it back and we will fix or replace it.

MONTANA RIFLE COMPANY & MRC ARE REGISTERED TRADEMARKS OF MONTANA OUTDOOR GROUP LLC.

ALL OTHER COMPANY & PRODUCT NAMES MAY BE TRADEMARKS OF THEIR RESPECTIVE COMPANIES. © 2018 MONTANA OUTDOOR GROUP LLC.

PRINTED IN THE USA.



*MEETING ALL YOUR EXPECTATIONS... THE PERFECT RIFLE.*

